

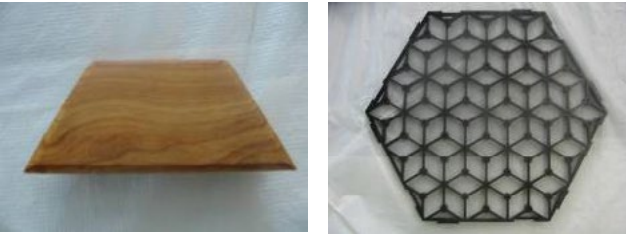
Hexidek

Hexidek

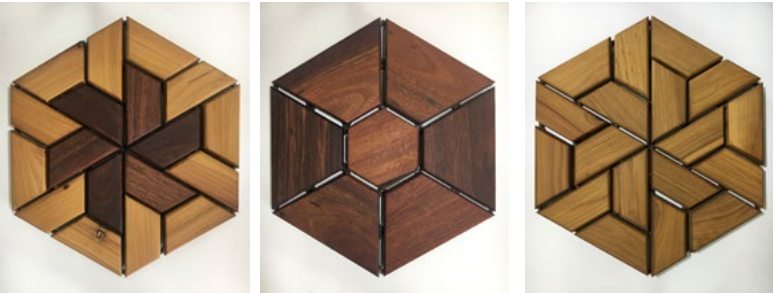
A quick Google search for “balcony garden ideas” reveals a huge and growing demand for creative small-balcony-garden solutions. If you have an old or unappealing balcony that you underuse, then Hexidek may be the solution you are looking for. Hexidek will turn your balcony into a special space where you will want sip a coffee, read a book, have a BBQ or just enjoy taking care of your plants.

The product uses decking and flooring offcuts that would normally go to waste. The main species used is Australian Cypress, a highly durable, stable Australian wood that is water, mould, rot, and insect resistant.

Hexidek is simple. It consists of a polypropylene base and half-hexagon or hexagon lozenges of wood that attach to the base without hardware.



In the factory these are connected in various configurations to make panels, a few of which are shown below. The accents are made from Australian Jarrah:



These tiles are simply clicked together on site to make patterns such as those in the following pictures. A balcony area of about 15m² can be laid in an hour of so. It is very quick and easy and requires no previous experience.






A Hexidek tile in 64% reproduction size. The length from tip to tip is 30cm, the width is 26cm.

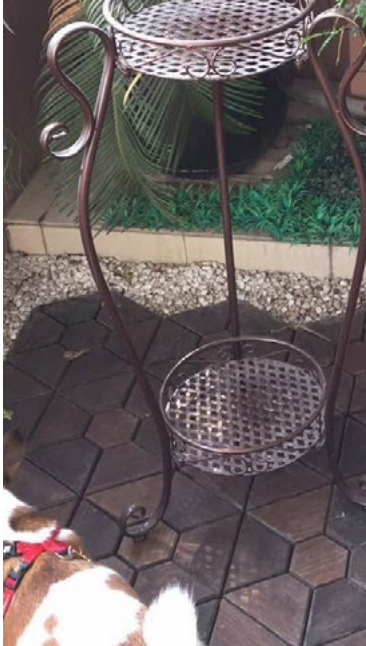
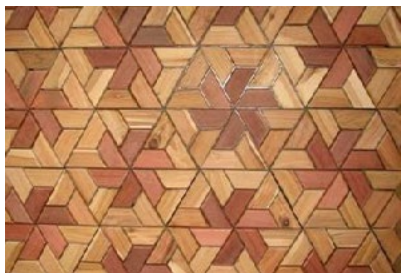
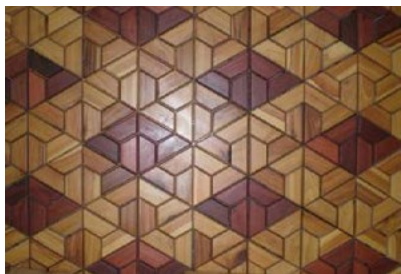
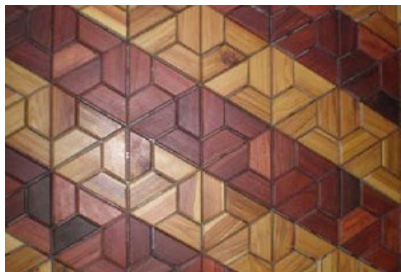
What about those irregular edges? No problem, to fill the edges we have trim made for the job. In the picture is an exploded view of the Hexidek configuration with trim. The trim can be used to finish off a deck of any size. You can also use other materials, such as artificial grass or snow-stone, to make highlights and borders.



Wood specie

	Australian Jarrah	
	Australian Cypress	

Amazing Feature wall idea. Another great application for Hexidek with unlimited creative potential (Think pixels. Make your own design on the computer and we will do the rest.)

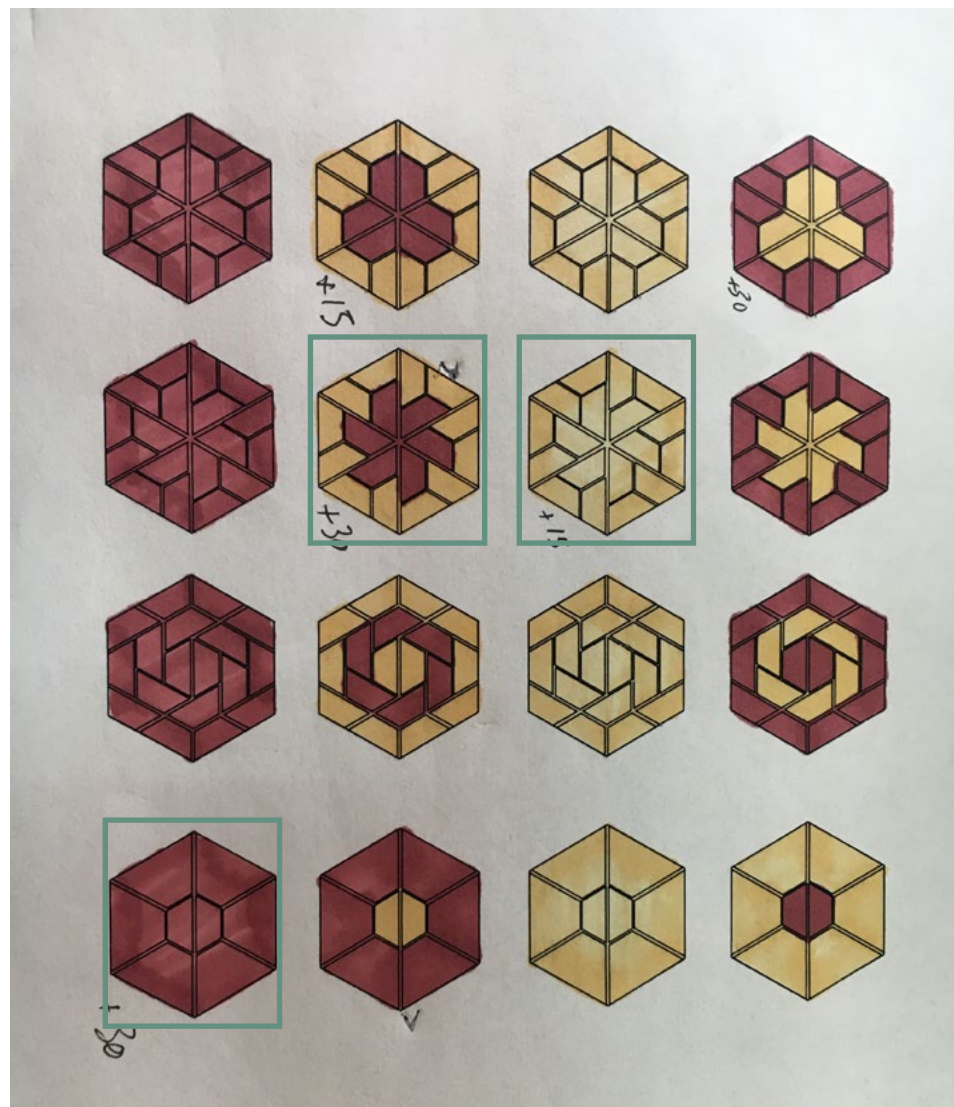


Shanghai apartment. This is a difficult balcony with curves. Snowstone has been used to create a pleasing contrast and deal easily with the irregular edges.

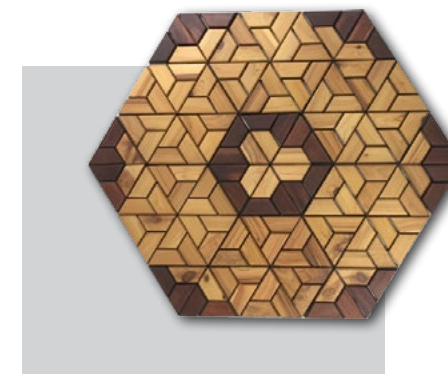
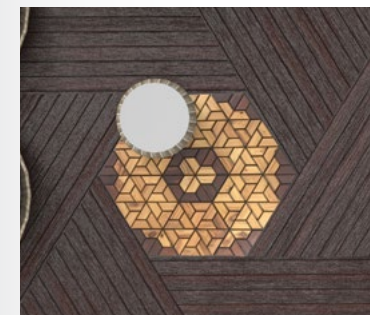
Milan apartment before and after snowfall.



Design example



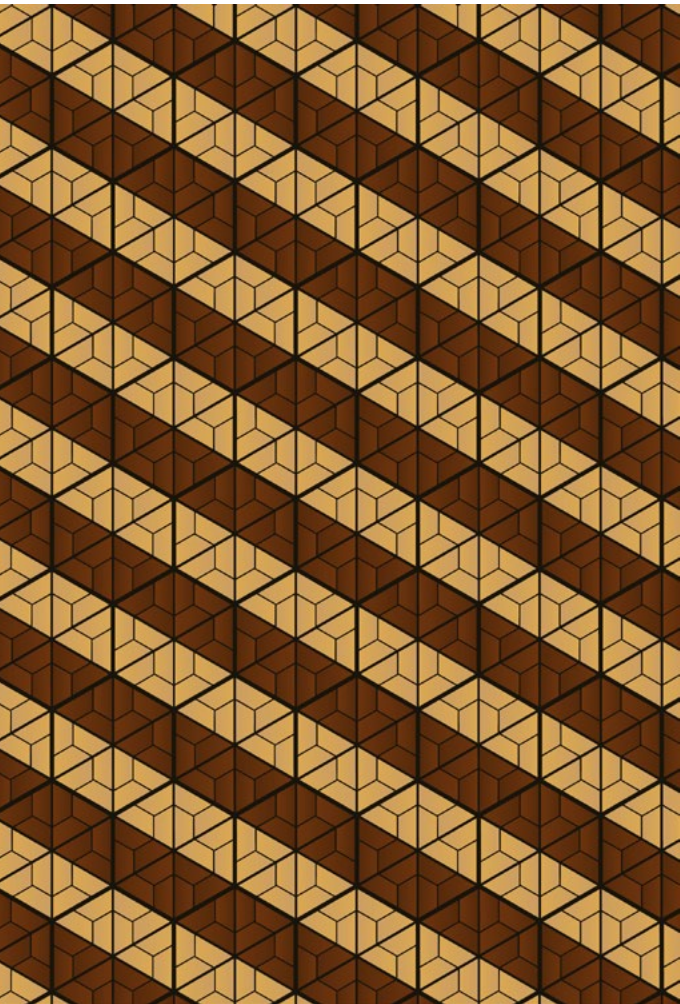
The modular structure with different grids allows for highly versatile designs.



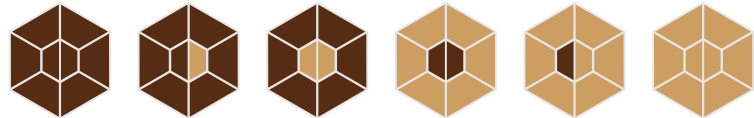
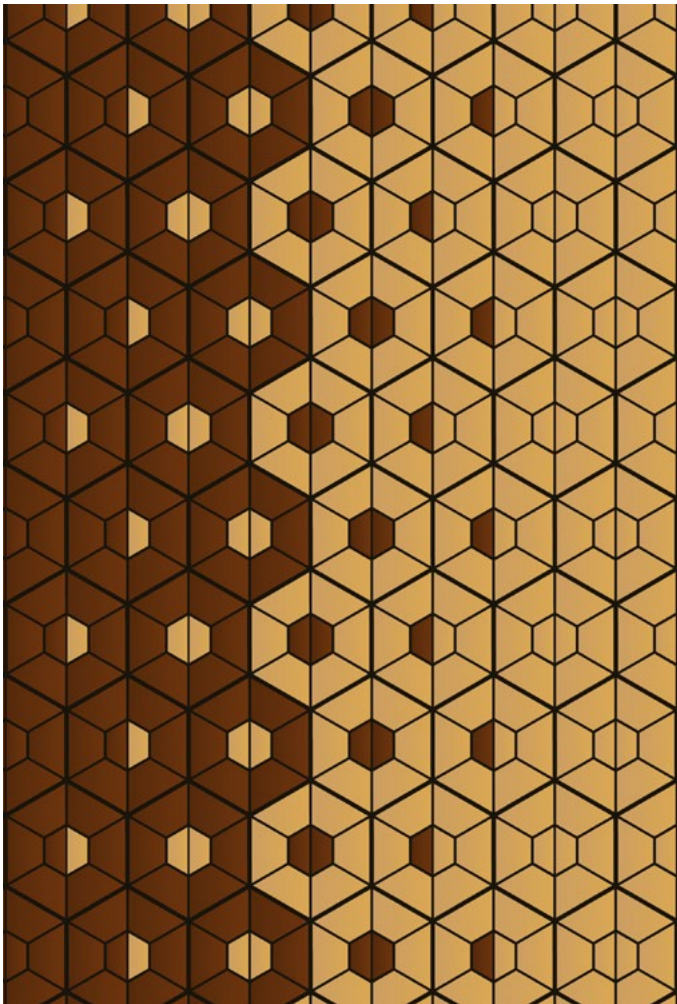
Hexidek can be incorporated into conventional decking to create a unique space. There are many ways to do this, and the example below is just one. The options are only limited by your imagination. The decking material will need to be laid on 10mm battens to bring the surface up to the same level as the Hexidek. Adequate gaps must be left for drainage.

Pattern ideas

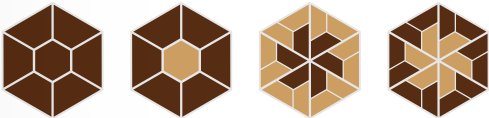
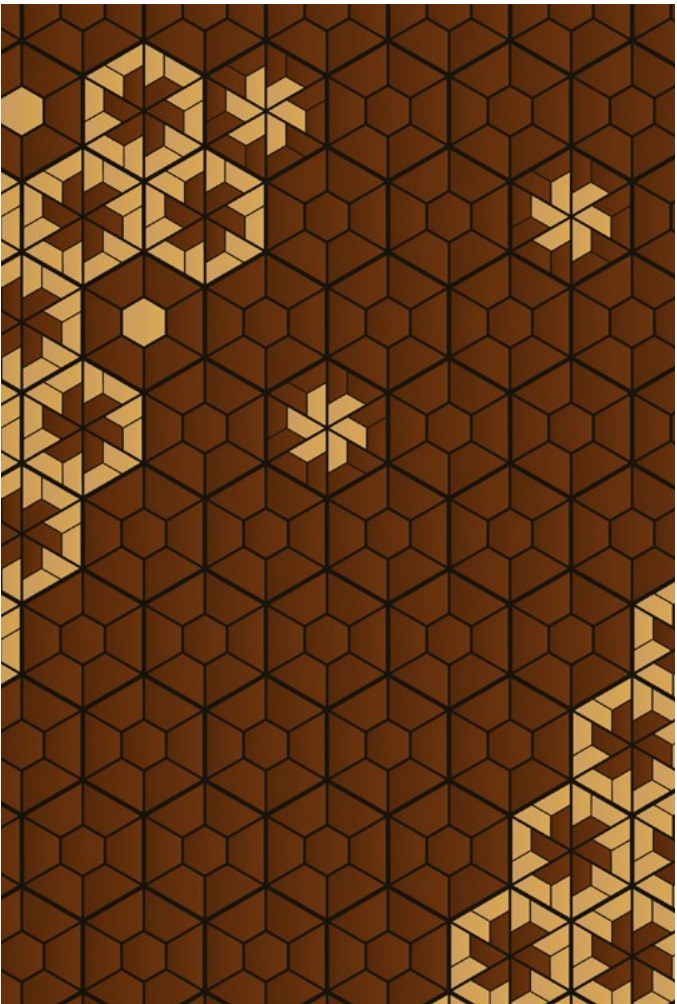
Stripes



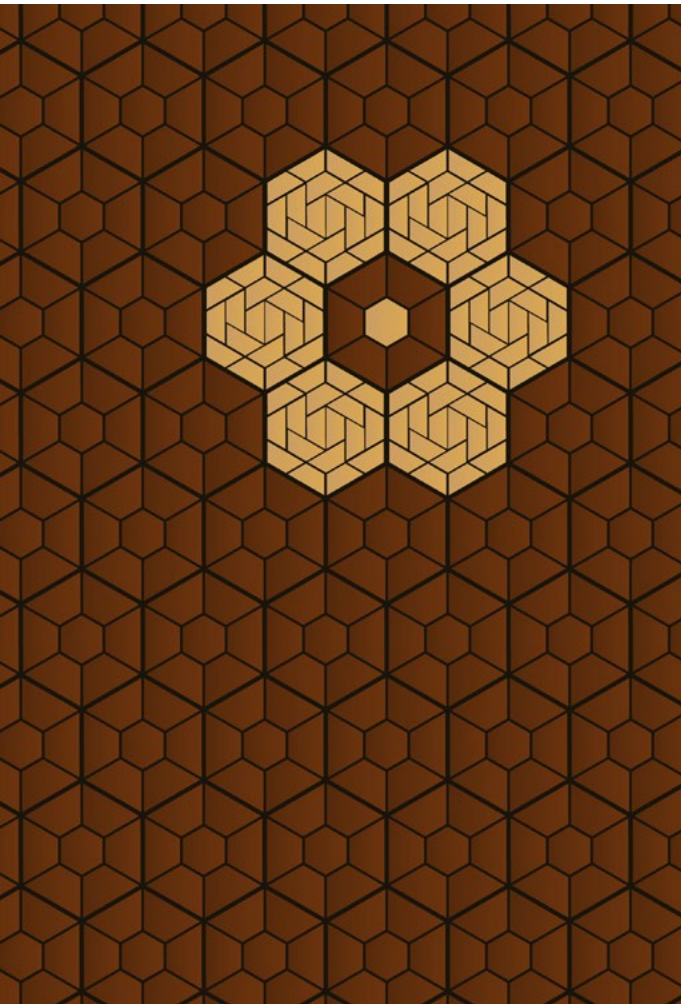
Night & Day



Star Island



Flower



Maintenance

Dirt cannot clog up Hexidek. It is raised on tiny feet slightly above the concrete floor and will allow water to run off as usual. It can be flushed with water or even vacuumed if you wish. The blocks stay nice and dry. There is no wood-to-wood contact, nor any wood-to-floor contact.

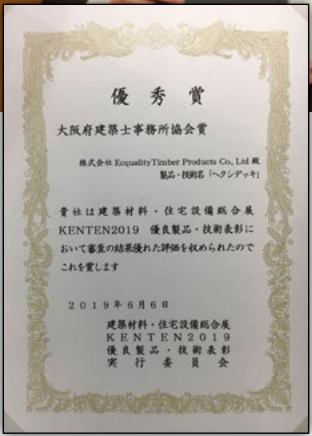
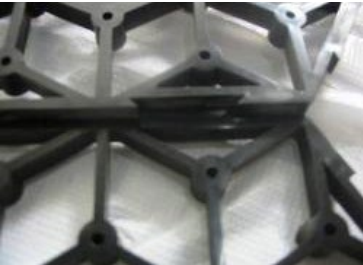
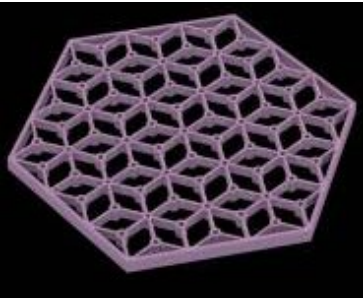
The main wood that we use is Australian Cypress, which is renowned for its durability and its fresh forest aroma. It will not rot, mould or be attacked by bacteria or insects, indeed insects dislike it and even termites will not eat it. In this application, even out on your balcony the wood will last for at least 25 years. In fact, testing has shown that Australian Cypress heartwood is among the most durable woods in the world and that above ground it will last for 50 years. Even when buried it will last at least 25 and that makes it a very unusual wood. We also use Jarrah, a durable WA hardwood.

The wooden blocks are hexagons and half hexagons. Technically half hexagons are called Isosceles Trapezoids, but we just call them blocks. The wood is the offcut material from flooring and decking manufacture and would have ended up as boiler fuel if we had not come up with a way to use it. Indeed, the motivation for devising this product was our aversion to this terrible waste of good wood.

The hexagonal tile base of Hexidek is made of polypropylene plastic, which is highly durable, especially when it is protected from the sun by the cover of wooden blocks.

The plastic base has little feet that keep it raised two millimeters above the floor. Water is can run off in the normal way unimpeded by the tiles. You can even squirt it with the hose to flush away any dust or debris that might collect under the tiles on your balcony.

The plastic tiles snap together and once interlocked form a very strong base because the hexagon shapes do not provide any possible cleavage lines as is the case with square tiles. Each tile is locked in place be the tiles around it. It cannot come apart. We tested this patented base for ten years in high traffic areas of our factory without the protection of wood without it breaking.



In June 2019 Equality Timber Products Co., Ltd was awarded the Osaka Architects Association Excellent Product and Technology Award at the Osaka Building Materials and Housing Industry Expo (KENTEN).

Technical Information

Material	
Tile base	Re-cycled polypropylene
Timber	Australian Cypress (<i>Callitris glauca</i>) and Jarrah (<i>Euc. marginata</i>). Please note that we may substitute other suitable timbers in future.
Coating	Decking Oil

Dimensions	
Apex to apex:	300mm
Between parallel sides:	260mm
Area:	17.09 pieces per m² (0.0585m²)

Packing Configuration

- Packaging
- Hexagonal box 280w x 290h
 - Printed or plain cardboard (Additional artwork on request at cost.)
 - 10 tiles per box

20 foot container loading configuration

- Pallet size 1050x1120mm
- 56 boxes per pallet (bottom pallets) x 10 pallets = 560 boxes
- 42 boxes per pallet (top pallets) x 10 pallets = 420 boxes
- Total = 980 boxes (9800 tiles)
- Area = 573m² approx.

Hexidek is the registered trademark held by Terry Newman and the product is patented by Terry Newman in China.

Patent No. 200720139153X.

Global patents have been applied for under the PCT. PCT Application No. PCT/CN2008/072198.

Infringements will be prosecuted.

Please direct all patent enquiries to Terry Newman.

Email: tjn@tjn.com.au

www.hexidek.com



ecquality